



# Beacons of Hope

*Social Fund Annual Report 2020*



# CONTENTS

**03** Beacons of Hope

**04** A Message from the Territorial Commander

**05** Key Highlights 2020

**09** Our Centres

Our Residential Homes for Children

Our Residential Home for the Elderly

Our Centre for Individuals with Special Needs

Our Corps & Community Services

**14** Corporate Information

**15** Corporate Governance

**16** Summary Financial Statements

**23** What Will You Leave Behind?

**24** Frequently Asked Questions (FAQ)

**26** Be a Beacon of Hope

**27** Contact Us

**29** The Salvation Army's Kuching Development Project



# Beacons of Hope

*In the same way, let your light shine before others, that they may see your good deeds and glorify your Father in heaven. Matthew 5:16*

Since 1938, we have been offering help where it is needed the most in Malaysia – from protection from the atrocities of the war, to emergency relief during the Covid-19 pandemic.

We will continue to radiate hope and offer help to members of society that need them the most.

---

The Salvation Army, an international movement, is an evangelical part of the universal Christian Church.

Its message is based upon the Bible.

Its ministry is motivated by the love of God.

Its mission is both spiritual and practical: preaching the Gospel of Jesus Christ; transforming lives through the power of the Holy Spirit; caring for people in God's name; and meeting human needs without discrimination.



## *A Message from the* **TERRITORIAL COMMANDER**

Dear friends,

The work of “The Army without Guns” began 83 years ago in Malaysia and since then, The Salvation Army has been adapting to stay current with the times and the needs of the nation.

Fuelled by our love for God and His compassion for people, we will continue to strive to meet the needs of our communities and to serve fervently without discrimination. We remain committed to providing the best possible care for our beneficiaries, as we equip them with the physical, emotional and spiritual needs to overcome their current situation.

We shoulder a huge responsibility to close the gaps in our communities, and we do that by working with relevant authorities and groups to address people’s needs. The rising cost of care remain a constant challenge even in pre-pandemic years and even more so now.

Our work would not be possible without the financial and voluntary support of our donors, partners and volunteers. You can also help us by spreading the word on what we do and how we have been improving the lives of the communities around us.

We look forward to working alongside you to continue our efforts to reach out to those in need and to improve people’s lives.

With every blessing.

A handwritten signature in black ink, appearing to read 'Rodney S. Walters'. The signature is fluid and cursive.

*Colonel Rodney S. Walters*

**Territorial Commander  
The Salvation Army  
Singapore, Malaysia and Myanmar Territory**

# Key Highlights 2020

## ≈ *Wear It with Us Campaign: Penang*



Instead of its annual Food Fair (Open Day) event in the light of the Covid-19 pandemic, the Penang Children's Home launched their 'Wear it With Us!' fundraising campaign in the presence of the Penang Chief Minister, Chow Kon Yeow, who also gave a speech during the launch event. The fundraising campaign took place from 21 September to 30 November 2020, where donors who contributed a minimum of RM100 to the home were given a free cloth face mask bearing The Salvation Army logo.

The Salvation Army Ipoh launched its Caring Hearts campaign in August





### *≈ Caring Hearts Campaign: Ipoh*

2020 in place of its annual fundraising food fair. Present at the launch were Dato' Dr Madhuri Majumder, Patron of The Salvation Army Ipoh. The campaign aimed to reach RM150,000 but thanks to the generosity of the community, it exceeded the targeted amount with a total of RM285,000.

### *≈ Mco 2020 Food Parcel Project*

#### *Kuching*

The Salvation Army Kuching delivered food aid to the B40 residents of Kampung Kesindu Sebuyau and Kampung Kudei Baru. The villagers were greatly affected when they were unable to get any income from the crops they were growing, and they were limited to their own districts due to the Movement Control Order.



### *Melaka*

The Salvation Army Melaka reached out to vulnerable members of the community by providing them food and essential supplies such as face masks and hand sanitisers that were donated by various parties, including the Lions Club Tanjung Bidara, Captain Stanley Yeong, Brother Robert Lim and Mamee-Double Decker (M) Berhad. Fresh hot meals were also prepared by staff and volunteers of The Salvation Army Melaka to distribute more than 8,000 home-cooked meals to the B40 communities in Melaka.



### *Selangor & Kuala Lumpur*

During the first Movement Control Order, The Salvation Army Regional Headquarters and the Kuala Lumpur Salvation Army Corps and Community Services reached out to those who have lost their jobs and needed food and essential supplies in Selangor and Kuala Lumpur. Over 1,000 food parcels were distributed around the Klang Valley with the help from members of the public who donated food items and cash donations. Each food parcel contained face masks, hand sanitisers, and canned food. Mamee-Double Decker (M) Berhad also sponsored several boxes of biscuits and snacks to be included in the food parcels.

### *Engkilili*





## ≈ *Emergency Response – Fire Relief Efforts In Kuching*

An evening inferno destroyed the Rh Naga Rasau longhouse in Engkilili, Sri Aman in September, causing 18 families to lose their homes and personal belongings. A team from The Salvation Army Kuching Corps made the 6-hour journey to Engkilili three times within a span of three months due to the Movement Control Order, to deliver essential goods such as groceries and toiletries and provided counselling services to the families.



### *Kampung Bintawa Ulu*

A total of five families lost their homes in a fire that broke out in Kampung Bintawa in November. The Salvation Army Kuching distributed food parcels, school bags and blankets to the families involved.



## *Our Residential Homes for Children*

The Salvation Army's work began in Malaysia among vulnerable children, and we are now continuing this legacy with five residential homes that provide care and protection for children and young people, especially in cases where immediate family members are unable to care for the underaged due to various unfortunate circumstances.

The homes provide day care and residential services to children and young people and ultimately, a haven to protect them from further danger and to help them overcome past traumas. A balance of educational and recreational activities are also in place to help build confidence and equip young people for the future. When our children and young adults gain healing, guidance and strength, they also learn to be disciplined and responsible individuals to contribute back to society.

Each of The Salvation Army Home has a superintendent in charge and they are supported by a team of staff comprising of houseparents, drivers, cooks and social

workers. However, the Homes are based on a family-type atmosphere with the children and young people contributing to the 'family' by doing daily chores and receiving pocket money in return.

We remain committed to provide a comfortable, nurturing home to our children and young people as they discover their purpose in life and be their utmost best in all they do.

### *Our operating centres are as follows:*

- *Penang Children's Home (since 1938)*
- *Kuching Children's Home (since 1959)*
- *Kuching Boys' Home (since 1960)*
- *Ipoh Children's Home (since 1960)*
- *Ipoh Boys' Home (since 1960)*

## *Our Residential Home for the Elderly*

The Salvation Army took over operations of the Perak Home for the Aged in 1994 from the Little Sisters of the Poor. Since then, we have continued to provide a peaceful environment for retirees to live out their golden years, particularly those who may not have family members to support them.

All residents are encouraged to pursue their individual interests and hobbies, while enjoying other activities that include music and singing sessions and skill development classes to keep their minds active and to forge close bonds with each other. The Home is also situated in the quiet and idyllic township of Jelapang, Ipoh, Perak, where they can enjoy the sights of green hills that Ipoh is famous for.

With dedicated care, love and support, coupled with daily nutritious meals and regular health check-ups, these senior citizens can continue to be healthy and agile.

- *Perak Home for the Aged (since 1994)*





## *Our Centre for Individuals with Special Needs*

The Hopehaven Special Needs Care Centre offers specialised care and training for children and young adults with disabilities such as Down's syndrome, autism, cerebral palsy and Attention Deficit Hyperactivity Disorder (ADHD) in the historical town of Melaka.

Students receive specialised training catered to their ever-changing needs such as early intervention programme (EIP), vocational skill workshops, engaging outdoor activities and living skills to enable them to lead meaningful, independent lives.

- *Hopehaven Special Needs Care Centre (since 1979)*

## *Our Corps (Churches) and Community Services*

The Salvation Army is an integral part of the universal Christian Church and so we express our commitment by sharing the Word of God at our local Corps (churches).

The Corps is our way of establishing a community presence, providing a diverse range of activities that include spiritual, social and recreational activities. Our Corps hold weekly Sunday services in English, Mandarin and Tamil in a relaxed atmosphere through a blend of both traditional and contemporary worship songs. We also share our personal testimonies, pray and read the Bible together. We also have Sunday School for children aged 12 and below to inculcate a spirit of prayer and interest in the Bible.

Besides our Sunday services, we also hold weekday and evening activities such as prayer meetings, family events, youth fellowship and small group meetings to encourage each other and to remain focused in our daily journey with God.

Since its early days in the UK, The Salvation Army has been conducting

community outreach programmes among low-income families through our Corps. In Malaysia, we help and support families experiencing difficulties by offering them our services and programmes so that they can use their financial resources to pay for crucial things such as rent and transportation.

Since the Covid-19 pandemic and the Movement Control Order (MCO), urban poverty has been exacerbated and as a result, we have more Malaysian families to care for.

The Salvation Army has also been caring for refugees in the Klang Valley since 2011 to help them navigate their way in Malaysia, including language, culture, and legal barriers while they wait for their permanent migration applications to other countries to be approved by the United Nations High Commissioner for Refugees (UNHCR).

Monthly food parcels are distributed from the Corps to families in need, each containing provisions such as rice, noodles, cooking oil and tinned food so that families will not go hungry.

• *Kuala Lumpur Corps & Community Services*

• *Banting Corps & Community Services*

• *Ipoh Corps & Community Services*

• *Penang Corps & Community Services*

• *Melaka Corps & Community Services*

• *Batang Melaka Outpost & Community Services*

• *Kuching Corps & Community Services*

• *Bintulu Corps & Community Services*

• *Kota Kinabalu Corps & Community Services*

• *Kota Belud Corps & Community Services*



## *Corporate Information*

The Salvation Army was established under the Salvation Army (Incorporation) Ordinance 1956. This Ordinance is now known as the Salvation Army (Incorporation) Act 1956 (Act 690).

### *Regional Business Board*

The Regional Business Board is Malaysia's decision-making committee and is responsible for all social, financial and property functions for The Salvation Army Malaysia.

#### **As of 1st May 2021**

Major Francis Ng	Regional Officer
Major Mary Ng	Regional Director of Women's Ministries
Major Tamil Chelvey A/P Thagavelu	Social and Community Service Officer
Captain R. Kayathrih	Superintendent, Kuching Boys Home
Envoy Roger Teoh	Melaka Team Leader
Jeannie Lin	Chief Accountant
Algene Tan	Senior Community Relations Manager



# Corporate Governance

*The Salvation Army continually works at putting good organisational policies and processes in place, towards good governance standards.*

## ■ ■ Donor Confidentiality Policy

The Salvation Army respects donors' confidentiality. All information and records will be kept confidential. The donor's name or other details will not be published in any corporate collateral unless permission has been obtained from the donor. The Salvation Army also respects the donor's decision to be excluded from the donors list or to restrict the frequency of solicitations through the use of mailings, email, telephone or other approaches.

## ■ ■ Conflict of Interest Policy

The Salvation Army's Conflict of Interest Policy aims to protect the organisation's welfare and best interests over and above all priorities and objectives. The policy mandates that no key personnel of The Salvation Army shall be involved in activities that violate the principles of the organisation and derive any personal profit or gain, directly or indirectly, by reason of his or her work with The Salvation Army. Each key person shall disclose to the Finance Council of personal interest which he or she may have in any matter pending before the organisation and shall refrain from participation in any decision on such matters, upon his/her taking up employment/appointment in the organisation. Annual declaration of interests by key personnel is required. He/She shall fully disclose to the Finance Council in the event a conflict of interest situation may arise.

## ■ ■ Reserve Policy

The policy defines reserve as that part of the income funds that is freely available for its operating purposes not subject to commitments, planned expenditure and spending limits. It does not include endowment funds, restricted funds and designated funds. In the audited financial statements, this reserve is termed "unrestricted reserve". The reserve provides financial stability and the means for the development of our principal activity. The level of the reserve is being reviewed annually.

## ■ ■ Fraud Control Strategy

Fraud is a criminal act that will not be tolerated by The Salvation Army. Fraud (includes finances, material and property) perpetrated by anyone in the organisation will be referred for investigation and the matter be reported to the Finance Council. Any allegation of fraud will be treated with confidentiality. This policy statement outlines detailed steps on the identification of suspected or actual fraud. It includes investigation, recommendations of action to be taken such as reporting to the Police and informing The Salvation Army International Headquarters, disciplinary action and recovery of debt. Appropriate counselling will be made available to all affected parties. Prevention is imperative and all heads, managers and supervisors must meet their responsibilities in preventing fraud and, wherever possible, adopt the necessary procedures and policies to minimise the risk of it happening.

## ■ ■ Whistle Blowing Policy

The Salvation Army is committed to maintaining a high standard of moral and ethical conduct; and complies with accounting, financial reporting, internal controls, corporate governance, auditing requirements and any relevant legislation. In line with this commitment and our belief in open communication and transparency, the Whistle Blowing Policy aims to provide an avenue for employees, volunteers and external parties to raise concerns, and offer reassurance that they will be protected from reprisals or victimisation for whistle blowing in good faith.

## ■ ■ Human Resources Management

The Salvation Army management accepts the responsibility for good employee relations within relevant legislation and labour framework. The Human Resources Department is responsible for administering the personnel policies and procedures concerning employment matters. All employees are given an Employee Manual. Guidelines are also established for effective management of our volunteer resources. A risk register is maintained to monitor areas of staffing, competency deficiency and workplace, safety and health. We recognise that attracting, retaining and motivating people requires innovative integration and enhancement of our reward, performance, learning and development management practices.

# *Summary Financial Statements*

**FOR THE YEAR ENDED  
31 DECEMBER 2020**

## **Statement by the Regional Business Board**

The accounts for the year were audited by H.L Lee & Co. Chartered Accountants.

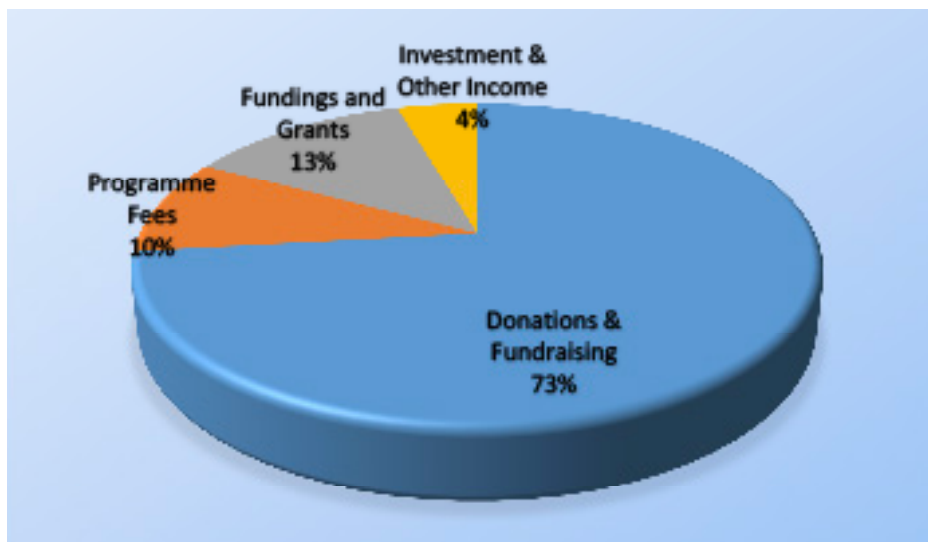
The Summary Financial Statements as set out on pages 17 to 20 contain only a summary of the information in the full financial statements. The Summary Financial Statements do not contain sufficient information to allow for a full understanding of the results and the state of affairs of the Organisation.

For further information, the full financial statements and the Auditors' Report on those statements should be consulted. To view the full financial report, please contact [pr.malaysia@smm.salvationarmy.org](mailto:pr.malaysia@smm.salvationarmy.org)

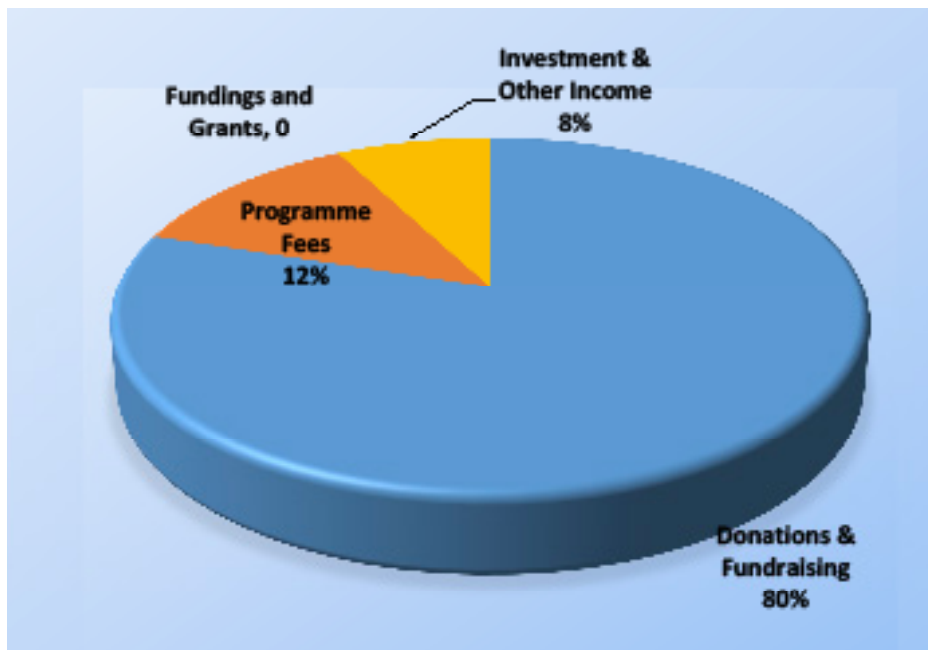
# Summary Statement of *Financial Performance*

FOR THE YEAR ENDED  
31 DECEMBER 2020

## OPERATING INCOME 2020



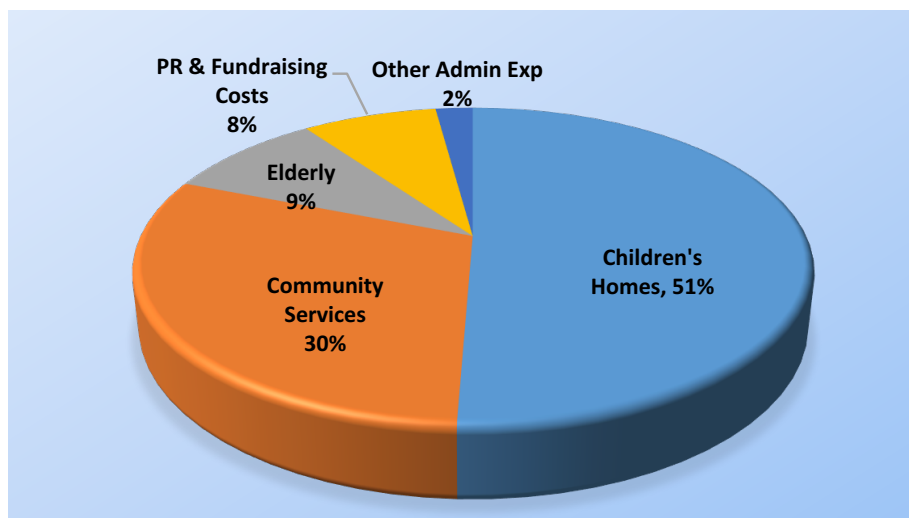
## OPERATING INCOME 2019



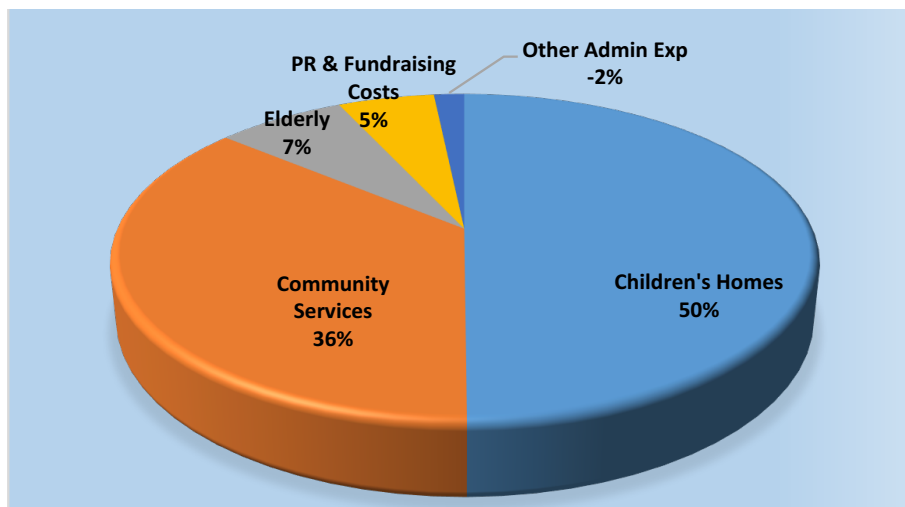
# Summary Statement of Financial Performance

FOR THE YEAR ENDED  
31 DECEMBER 2020

## OPERATING EXPENSES 2020



## OPERATING EXPENSES 2019



# Summary Statements

	2020 (RM'000)	2019 (RM'000)
Incoming resources	6,457	7,339
Expenditures	6,249	7,299
Surplus	208	41
<b>Appropriations from /(to) Funds (RM'000)</b>		
<b>Of current years income to</b>		
Restricted funds	(334)	-
Designated funds	(231)	(296)
Unrestricted funds	(5,893)	-7,121
<b>Appropriations from /(to) Funds (RM'000)</b>		
<b>To finance current costs from</b>		
Capital contribution funds	225	260
Restricted funds	17	24
Designated funds	6	30
Unrestricted funds	6,001	7,063
<b>Transfers between Funds</b>		
Capital contribution funds	(88)	89
Restricted funds	110	(49)
Designated funds	142	8
Unrestricted funds	(164)	(8)

## of Changes in Funds and Reserves for the year ended 31 Dec 2020

	<b>Total Funds</b>	
	2020	
	RM'000	
As at 1 Jan 2019	8,202	
Total surplus for the year	41	
As at 31 Dec 2019	8,243	
As at 1 Jan 2020	8,243	
Total surplus for the year	208	
As at 31 Dec 2020	8,451	
<b>of Financial Position as at 31 Dec 2020</b>		
	2020	2019
	(RM'000)	(RM'000)
<b>Funds and Reserves</b>		
Capital contribution funds	525	592
Restricted funds	484	142
Designated funds	7,386	7,508
Unrestricted funds	56	-
<b>Total Funds and Reserves</b>	8,451	8,243
Non current assets	410	593
Current assets	8,680	7,863
<b>Total Assets</b>	9,090	8,456
Current liabilities	639	213
<b>Total Liabilities</b>	639	213
<b>Net Assets</b>	8,451	8,243

# *Notes to the Summary Financial Statements*

## *General Information*

The Salvation Army Malaysia ("the Organisation") is a non-profit organisation registered in Malaysia under the Salvation Army (Incorporation) Act 1956 (Revised 2008) which operates the Malaysia Social Fund.

The Malaysia Social Fund ("the Fund") provides:

- *Residential homes for the elderly and children;*
- *Practical assistance to children, youth and families in need*
- *Special education to persons with special needs*
- *Food parcel and disaster emergency relief work*
- *Counselling services*

The registered office of the organisation is located at No. 26, 3rd Floor, Jalan Puteri 4/2, Bandar Puteri, 47100 Puchong, Selangor.

The territorial headquarters office of the Organisation is located at 20, Bishan Street 22, Singapore 579768.

There have been no significant changes in the nature of the Fund's activities during the year.

## *Basis of Preparation*

The financial statements have been prepared in accordance with the Malaysian Private Entities Reporting Standards (MPERS), and the provisions of the Salvation Army (Incorporation) Act 1956 (Revised 2008).

The financial statements have been prepared on the historical cost basis, except as otherwise stated in the financial statements.

## *Funds*

### **Consolidated Funds Malaysia**

This comprises the sum of the General fund and Social Fund maintained in the Organisation.

### **General Fund Malaysia**

This is the fund which deals with the evangelical work of the Organisation and all Headquarters matters not specially included in other funds.

### **Social Fund Malaysia**

This is the fund which deals with the social operations of the Organisation and is the only fund that issues tax exempt receipts.

### **Capital Contribution Funds**

Capital contribution funds are set up by the Organisation to meet the costs of property and equipment.

### **Restricted Funds**

Restricted funds are donation from donors for a specific purpose.

### **Designated Funds**

Designated funds are funds specifically set aside by the Organisation to meet planned or anticipated needs.

### **Unrestricted Funds**

This is the working capital of the Organisation.

## *Income Tax*

The Organisation is a non-profit organisation and it is exempted from income tax pursuant to Schedule 6 Paragraph 13 (1)(b) of the Income Tax Act 1967.



## *What will you leave behind?*

Some people's legacies are written on monuments. Yours can be written on lives.

There will always be people in need of assistance beyond your lifetime and you can choose to help by including The Salvation Army in your will. Whether it is of a specific nature such as leaving a particular piece of property, or sums of money from insurance policies or the Employees Provident Fund (EPF), you can be assured of leaving a lasting legacy and benefit people in need.

You can also choose to bequeath personal items such as clothing, furniture, household goods and electronic goods to us. These items will either be sold at our Family Thrift Stores or will be given to people in need. Our team at Red Shield Industries Malaysia can assist in the collection of these items when the time is right.

To know more about how you can leave a legacy that lasts, do reach out to us at [pr.malaysia@smm.salvationarmy.org](mailto:pr.malaysia@smm.salvationarmy.org)



# Frequently Asked Questions (FAQ)

## **About The Salvation Army Malaysia**

### **1) What does The Salvation Army do in Malaysia?**

The Salvation Army meets the needs of the underprivileged in the community by running a wide range of community services. They include centres for the elderly and children, special education, family support services, corps community services and emergency relief programmes.

The Salvation Army Corps (churches) also minister to people in English, Mandarin and Tamil languages.

### **2) How is The Salvation Army funded?**

The Salvation Army is supported through donations, government grants and programme fees. We run regular public appeals and organise fundraising events throughout the year.

### **3) Is The Salvation Army a registered organisation in Malaysia?**

The Salvation Army is registered in Malaysia under an ordinance (Act of Parliament). This is documented in the Laws of Malaysia, Act 690, Salvation Army (incorporation) Act 1956 (Revised 2008). The Salvation Army in Sarawak is registered under the Sarawak Government Gazette, 1953, The Missionary Societies Order, 1957.

### **4) Why the name “The Salvation Army”? Is there a military structure within the organisation?**

William Booth founded The Salvation Army in 1865 in the poor areas of East London. A

former Methodist preacher, Booth wanted to make the church more accessible to all people at a time when many of the working class were excluded from church congregations.

Originally known as The Christian Mission, the name “The Salvation Army” was adopted in 1878 and since then the organisation’s structure has been based upon military lines.

The reason the organisation adopted military insignia and terminology is to represent the battle being waged against poverty and sin. This was very much in keeping with popular Christian themes at that time, reflected in well-known hymns of that era such as “Onward Christian Soldiers”.

To this day, the administration of The Salvation Army is top-down and autocratic, in true military style - with leadership vested in the General from The Salvation Army International Headquarters, London. While the chain of command extends from the General, through the Chief of Staff, into overseas departments, actual administration is vested in the territories and their individual community units.

### **5) How did The Salvation Army made its way to then-Malaya?**

It all started in July 1938 when Frederick Harvey (Adjutant) set up the first centre in a vacated YMCA building in Penang. He went on to establish a free school on the island for hundreds of poor children.

By 1940, outreach had begun in Melaka and in Ipoh, a Boys Home was established with

a soap-making business to provide much-needed income for the Home.

During the Second World War, The Salvation Army begun emergency relief work in Penang, organising rescue missions such as ferrying wounded civilians to hospitals, running evacuation camps as civilians fled bombing raids and also a residential home for boys who lost their families.

After the War, the work of The Salvation Army flourished as it begun work in places such as Kuching, Batang Melaka and Kuala Lumpur, and it continues to grow to this day.

### **About Donations**

#### **6) Where does the money raised by donations go to?**

The Salvation Army makes every effort to ensure that public donations are effectively dispensed and reaches those in need. This also means that any amount raised in Malaysia are channelled back to communities in need in the country. For every Ringgit spent, 85 sen is spent on our social programmes to help our beneficiaries.

#### **7) Will the money I donate go to support religious activities?**

No, the money raised through donations only goes to social service programmes. The Salvation Army's church activities are supported by the local church community.

#### **8) When I donate to The Salvation Army, can I specify that the money be used for a specific purpose?**

Yes, and we encourage that donors specify if they would like their donations to be channelled to one of our centres or programmes. Unspecified donations will be

channelled to whichever centre/programme that needs funding the most.

#### **9) Are cash donations to The Salvation Army tax-exempted?**

Yes, all cash donations are tax-exempted according to Malaysia's Income Tax Act 1976 under Section 44 (6).

#### **10) How are in-kind donated goods used to help the needy in the community?**

If it is too good to throw away, give it to The Salvation Army!

The Salvation Army is credited to be one of the oldest charitable organisations in the world to operate the thrift store concept to sustain its community projects.

Preloved goods that are still in good and usable conditions are sold at affordable prices through the Family Thrift Stores, and the funds raised are channelled back to The Salvation Army.

In certain cases, some preloved goods are distributed directly to people who need them. For instance, to communities that have lost their belongings in a fire, they will receive clothing, household items and furniture from our Family Thrift Stores.





## Be a Beacon of Hope

All cash donations are tax-exempt in accordance to Malaysia's Income Tax Act 1976 under Section 44 (6).

### IMPORTANT !

Please share the proof of payment slip to us either via Whatsapp (016 -930 4929) or e-mail (pr.malaysia@smm.salvationarmy.org) along with your personal details so we can send you the tax-exempt receipt.

#### Bank Transfer

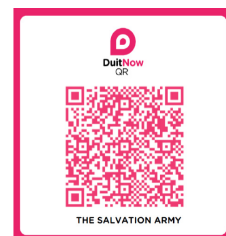
**Bank:** Maybank

**Account Name:** The Salvation Army

**Account Number:** 5005 1196 0014

#### Online Transfer

Use your banking app or Touch 'n Go on your mobile phone to scan and donate directly to us via DuitNow.



#### Pre-loved Goods

Contact Red Shield Industries at the following

**Whatsapp:** 011-6292 1078

**Phone:** 03-8081 1046

**Online:** [www.redshieldindustries.com.my](http://www.redshieldindustries.com.my)

# Contact Us

## *Kuala Lumpur & Selangor*

### **Malaysia Regional Headquarters**

26, 3rd Floor, Jalan Puteri 4/2, Bandar Puteri  
47100 Puchong, Selangor  
Tel: 03 8061 4929 / 016-930 4929  
pr.malaysia@smm.salvationarmy.org

### **Red Shield Industries Warehouse**

15, Jalan Subang 7/1, Twin Park,  
Taman Perindustrian Subang  
47500 Subang Jaya, Selangor  
Tel: 03 8081 1046

### **Kuala Lumpur Kindergarten/**

### **Kuala Lumpur Corps & Community Services**

No. 1 Jalan Lingkungan Hujan  
Taman Overseas Union  
58200 Kuala Lumpur  
Tel: 03 7782 4766

### **Banting Corps & Community Services**

No. 1, Jalan Emas 2  
Bandar Sg Emas  
42700 Banting, Selangor  
Tel: 03 3184 0419

## *Perak*

### **The Salvation Army Ipoh Children's Home**

255 Jalan Raja Permaisuri Bainun  
(Jalan Kampar)  
30250 Ipoh, Perak  
Tel: 05 254 9767

### **The Salvation Army Ipoh Boys' Home**

No. 4367 Jalan Tambun  
31400 Ipoh, Perak  
Tel: 05 545 7819

### **Perak Home for the Aged**

Jalan Bersatu, Jelapang,  
30020 Ipoh, Perak  
Tel: 05 526 2108

### **Ipoh Corps & Community Services**

123-125 Jalan Taman Star  
Wah Keong Park  
31400 Ipoh, Perak  
Tel: 05 545 3269

### **Ipoh Family Thrift Store**

26, Jalan Besar, Tambun  
31400 Ipoh, Perak  
Tel: 05 548 3314

## *Penang*

### **The Salvation Army Penang Children's Home**

8A Logan Road  
10400 Penang  
Tel: 04 227 0162

### **Penang Corps & Community Services**

53 Perak Road  
10150 Penang  
Tel: 04 229 0921

### **Penang Family Thrift Store**

56D-56E, Perak Plaza, Jalan Perak,  
10150 Penang  
Tel: 04 227 9369

## *Melaka*

### **Hopehaven Special Needs Care Centre / Melaka Corps & Community Services**

No. 321 Jalan Parameswara  
75000 Melaka  
Tel: 06 283 1201

### **Batang Melaka Kindergarten/ Batang Melaka Outpost & Community Services**

J7702 Main Road, Batang Melaka,  
77500 Selandar, Melaka  
Tel: 06 446 1601

### **Melaka Family Thrift Store**

113, Ground Floor, TMR 24,  
Taman Melaka Raya, 75000 Melaka  
Tel: 06 282 5620

## *Sarawak*

### **The Salvation Army Kuching Children's Home**

No. 138, Jalan Upland  
93200 Kuching, Sarawak  
Tel: 082 248 234

### **The Salvation Army Kuching Boys' Home**

No. 139, Jalan Ban Hock  
93100 Kuching, Sarawak  
Tel: 082 242 623

### **Kuching Corps & Community Services**

Sekama Road  
93300 Kuching, Sarawak  
Tel: 082 333 981

### **Kuching Family Thrift Store**

7, Ground Floor, Jalan Petanak,  
93100 Kuching, Sarawak  
Tel: 082 410 564

### **Bintulu Corps & Community Services**

Shop Lot 216, Lot 1362, 1st Floor,  
Tanjung Batu Commercial Centre  
Jalan Tun Razak, 97000 Bintulu,  
Sarawak  
Tel: 086 315 843

## *Sabah*

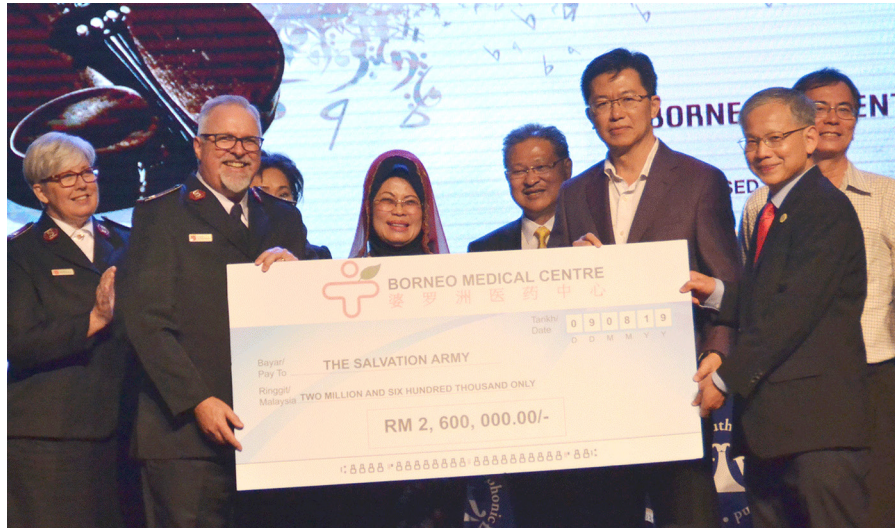
### **Kota Kinabalu Corps & Community Services**

Shop Lot 1-1-1, 1st Floor  
Lorong Seri Kiansom, Taman Seri  
Kiansom 88450 Kota Kinabalu, Sabah  
Tel: 088 433 766

### **Kota Belud Outpost & Community Services**

Lot 1, First Floor, Block C,  
Yick Ming Commercial Center  
89150 Kota Belud, Sabah  
Tel: 011 6483 3164

# *The Salvation Army's Kuching Development Project*



In July 2020, the Sarawak government granted RM4 million to The Salvation Army to relocate the Kuching Boys' Home and Kuching Children's Home to Kota Samarahan, a 30-minute drive from Kuching.

This is also in response to the state government providing a 7.5-acre site with a 60-year lease. Earlier in 2019, Borneo Medical Centre started the ball rolling by donating RM2.6 million to construct the

new building.

In the future, the purpose-built site may not only include care homes for children but also a care home for the elderly, to meet the needs of the ageing population in Sarawak.

Due to the Covid-19 pandemic, construction is slated to be completed by early 2023.

To know how you can support this project, do reach out to us for more information.





**The Salvation Army Malaysia**

No. 26, 3<sup>rd</sup> Floor, Jalan Puteri 4/2, Bandar Puteri 47100 Puchong, Selangor

Tel: 03 8061 4929 / 016 930 4929 Fax: 03 8061 4049 Email: [pr.malaysia@smm.salvationarmy.org](mailto:pr.malaysia@smm.salvationarmy.org)

Website: [www.salvationarmy.org/malaysia](http://www.salvationarmy.org/malaysia) Facebook: [www.facebook.com/SalvationArmyMalaysia](http://www.facebook.com/SalvationArmyMalaysia)